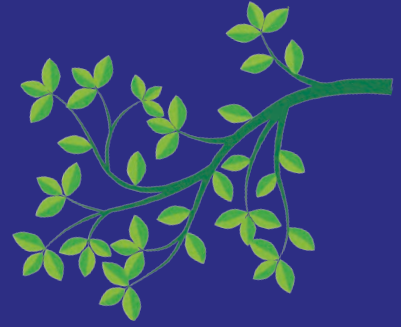


BLUE IGUANA CONSERVATION

**BLUE IGUANA GARDEN
STARTER PACK**

WHAT ARE BLUE IGUANA GARDENS?



Blue iguanas are Grand Cayman's most endangered species. Being large, herbivorous reptiles, they mainly feed upon natural vegetation within their shrubland forest habitat on the East End of the island.

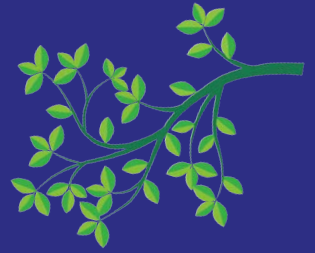
As Grand Cayman aspires to increase the population of Caymanian residents, much of the blue iguana habitat is now being depleted to make way for housing and agricultural land, which means that it is harder to find available space and food sources for blue iguanas.

Blue Iguana Conservation, run by The National Trust for the Cayman Islands, is a project that strives to protect and conserve these charismatic animals by monitoring protected blue iguana areas and maintaining a conservation breeding facility in North Side, which is open to the public.

The Blue Iguana Gardens initiative is aimed to engage the Caymanian community in identifying areas within private yards and gardens in order to grow and maintain supplemental food sources for the blue iguanas housed at the conservation breeding facility. By empowering the general public to become involved in growing food plants, the pressure on wild food collection sites will be eased and Cayman will become better engaged with this incredible species that is not found anywhere else in the world!



WHAT WILL I HAVE TO DO?



For many community members - not a lot! Your garden or land may already have several food plant species growing within it. If so, we would kindly ask you not to cut them down, nor spray them with insecticides or any other chemicals, so that the Blue Iguana Conservation staff, only with your permission, can sustainably harvest the leaves, flowers and/or fruit from time to time.

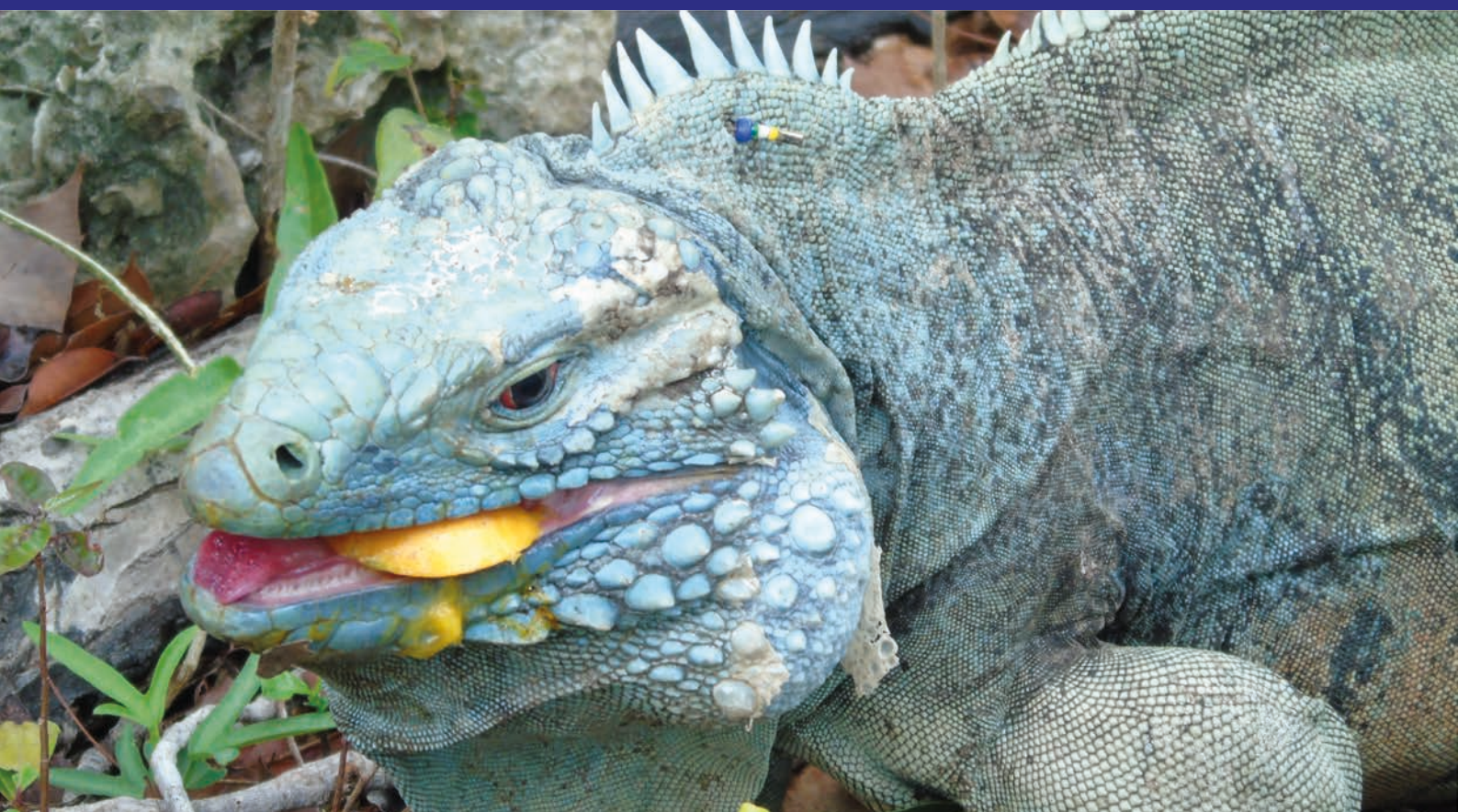
Additionally, there are some food plants that can be cultivated from seeds, or moved and replanted from an area that is being cleared for development.

Don't have a garden? Not to worry! Anyone can join in by growing plants in a pot or window box!

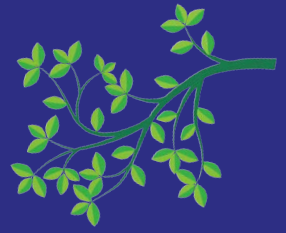
Blue Iguana Conservation staff will only come to your land when you have provided special permission - please contact us when your plants are ready for picking!

Contact the Blue Iguana Conservation team to arrange a consultation, during which we will discuss your current plant species, available planting options and enable us to support you with setting up your Blue Iguana Garden:

bic@nationaltrust.org.ky



WHAT WILL I GET FROM HAVING A BLUE IGUANA GARDEN?



As a thank you to our Blue Iguana Gardeners, you will gain:

- a personalised certificate;
- recognition on social media, in the Blue Iguana Conservation newsletter and in the Annual Report from the National Trust for the Cayman Islands;
- invitation for two people to attend the annual VIP Blue Iguana Gardeners event at the Blue Iguana Conservation facility.

School or business Blue Iguana Gardeners will receive:

- a certificate for your school or business;
- recognition on social media, in the Blue Iguana Conservation newsletter and in the Annual Report from the National Trust for the Cayman Islands;
- an annual visit to your school or business to present about Blue Iguana Conservation and your part in the project!



WHICH PLANT SPECIES DO BLUE IGUANAS EAT?

Did you know, blue iguanas are known to eat over **105** different plant species? Many of the plants can be found alongside roadside verges and on private land. Here are some examples of the blue iguana's most staple food items:



INDIAN MULBERRY (NONI)
LEAVES AND FRUITS



GANGES ROSE/ CHINESE VIOLET
LEAVES AND FLOWERS



YELLOW ROOT
LEAVES AND FRUITS



WILD CALLALOO
LEAVES



INDIGO
LEAVES AND FLOWERS



PAPAYA
LEAVES AND FRUITS

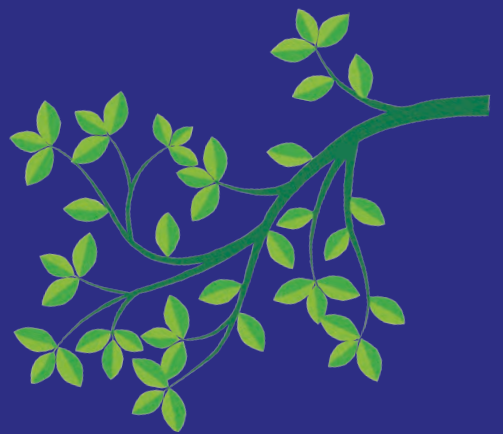
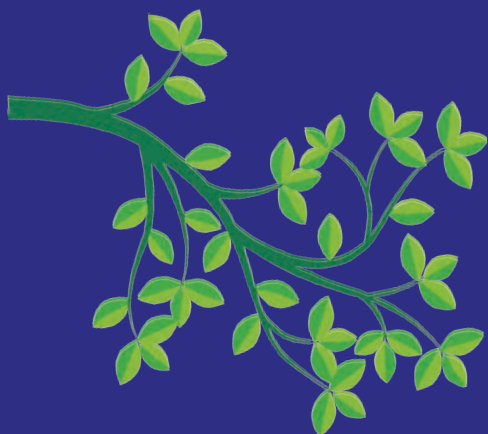
A MORE DETAILED PLANT LIST

* **WHOLE PLANT**, * **LEAVES ONLY**, * **FLOWERS ONLY**, * **FRUITS ONLY**

Banana (*Musa sapientum*)*
Beach Naupauka (*Scaevola taccada*)*
Bloody Head (*Capparis flexuosa*)*
Blue Bonnet (*Clitoria ternatea*)*
Bougainvillea (*Bougainvillea glabra*)*
Bull-Hoof (*Bauhinia divaricata*)*
Callaloo (*Amaranthus spp.*)*
Cayman Broadleaf (*Cordia sebestena*)*
Chickenweed (*Euphorbia hypericifolia*)*
Chinese Violet (*Asystasia gangetica*)*
Cow-Itch Vine (*Cissus trifoliata*)*
Devil's Pumpkin (*Passiflora suberosa*)*
Donkeyweed (*Stylosanthes hamata*)*
Duppy Gun (*Ruellia tuberosa*)*
Hibiscus (*Hibiscus rosa-sinensis*)*
Indian Mulberry (*Morinda citrifolia*)*
Indigo (*Indigofera suffruticosa*)*
Jamaica/Java Apple (*Syzygium samarangense*)*
Longan (*Dimocarpus longan*)*
Mango (*Mangifera indica*)*
Match Head (*Phylla nodiflora*)*
Matted Sandmat (*Euphorbia serpens*)*
Moringa (*Moringa oleifera*)*
Morning Glory (*Ipomoea spp.*)*
Naseberry (*Manilkara zapota*)*
Papaya (*Carica papaya*)*
Portulaca (*Portulaca oleracea*)*
Purselin (*Blutaparon vermiculare*)*
Rosary Pea (*Abrus precatorius*)*
Sea Purslane (*Sesuvium portulacastrum*)*
Shamrock (*Tecoma stans*)*
Suriname Cherry (*Eugenia uniflora*)*
West Indian Holly (*Turnera ulmifolia*)*
West Indian Lantana (*Lantana camara*)*
Whitewood (*Tabebuia heterophylla*)*
Yellow Root (*Morinda royoc*)*



BECOME A BLUE IGUANA GARDENER



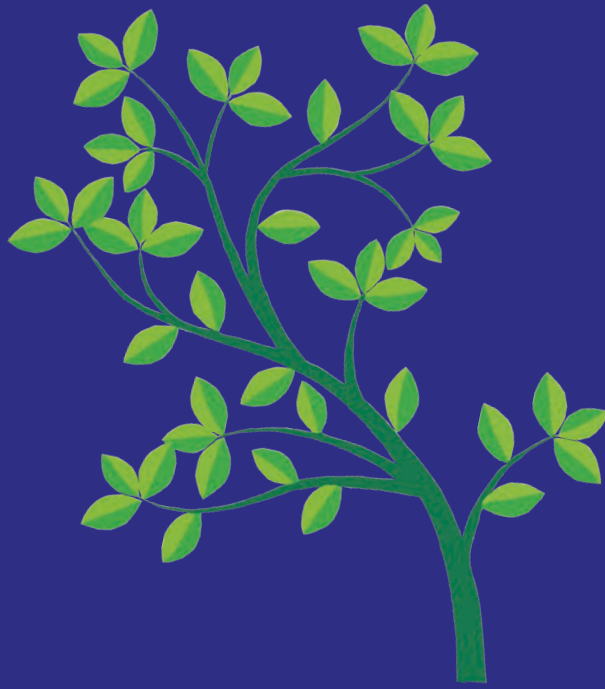
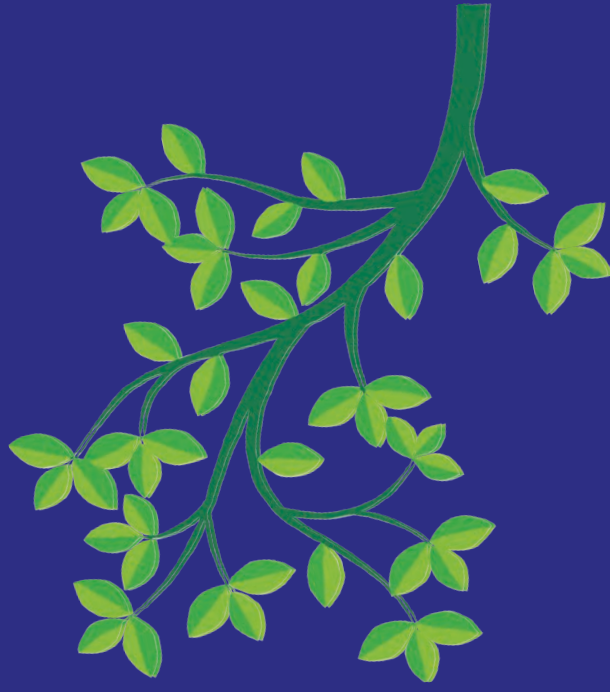
BLUE IGUANA CONSERVATION

BLUE IGUANA GARDEN STARTER PACK



@blueiguanaconservation

Designed by Blue Tongue Illustration for the National Trust for the Cayman Islands



BLUE IGUANA GARDENS CONTACT FORM



If you are interested in setting up a Blue Iguana Garden, please fill in the form below and either send it to: **bic@nationaltrust.org.ky**; or mail to/drop the form into the office:
National Trust for the Cayman Islands, 558A South Church Street, PO Box 31116, KY1-1205.
To book a consultation, please contact **517-1326**.

Name: (delete as applicable) Dr. Mr. Mrs. Ms.
Forename _____ Surname _____
Dr. Mr. Mrs. Ms.
Forename _____ Surname _____

Or/ name of school or business: _____

Email: _____

Contact phone number: _____

Address: _____

Available plant species (if known): _____

Commitments:

- I will ensure to inform Blue Iguana Conservation staff when they may have access to my land for the responsible harvesting of blue iguana food plant species.
- I understand that Blue Iguana Conservation staff will only access my land after I have provided permission for them to do so, and that they will be identifiable in work uniform at all times.
- I will inform the Blue Iguana Conservation staff of any chemicals or insecticide products used within the Blue Iguana Garden.
- I will inform Blue Iguana Conservation staff if I would prefer not to be recognised as a Blue Iguana Gardener on social media or any other National Trust literature.

Signature _____ Date _____

If you would no longer like to partake in this initiative, please ensure to contact **bic@nationaltrust.org.ky**